



# Service-Learning in Baltimore County Public Schools

Presented by:  
Office of Family & Community Engagement (FACE)  
Stacey Wade, Program Specialist  
[swade@bcps.org](mailto:swade@bcps.org)



➤ ***Engage. Empower. Excel.***  
Baltimore County Public Schools

# Agenda

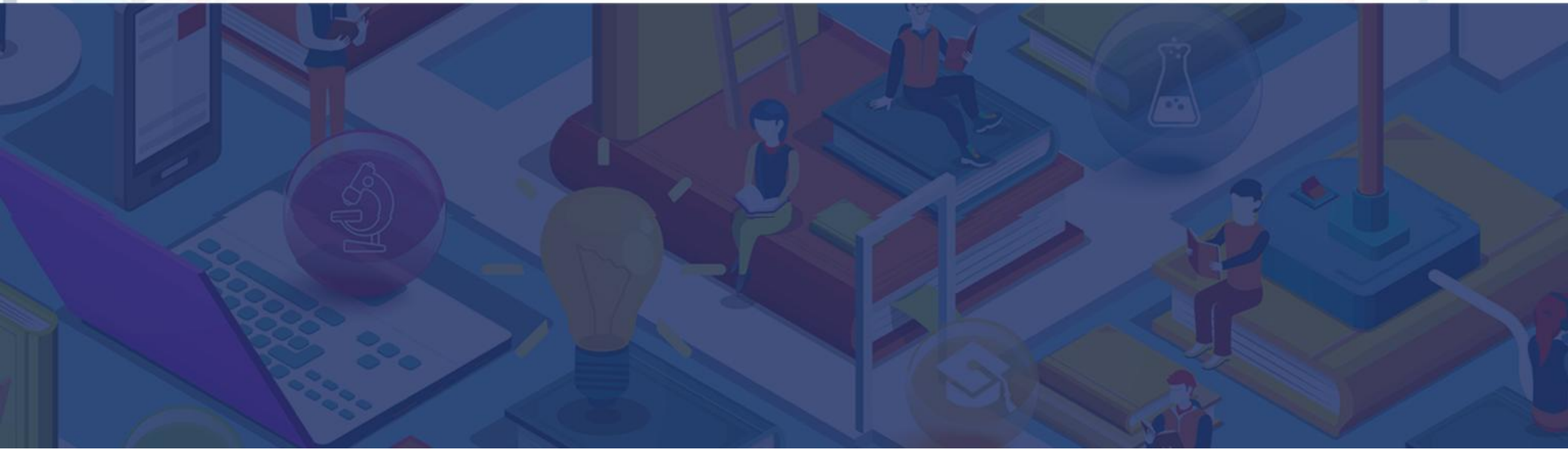


**We will cover the following topics:**

- Student Service-Learning (SSL) Overview
- Embedded vs Independent Hours
- Supporting Your Student
- Opportunities in Community



# Student Service-Learning (SSL) Overview



# BCPS Student Requirements



**SSL is a Maryland state graduation requirement.**

- Students must complete **75** SSL hours for graduation.
- Implementation may differ in other counties.
- Begins in middle school.
- Combination of embedded (infused) and independent hours.



**More information on the BCPS Service-Learning site.**  
[www.bcps.org/servicelearning](http://www.bcps.org/servicelearning)

# What does it look like?



The Maryland State Department of Education defines service-learning as a **high-impact instructional approach** that combines **meaningful service** to the community with **curriculum-based learning**.

It is a form of civic education that provides students with diverse opportunities to explore and reflect on what it means to be active, engaged citizens.

# Maryland's 7 Best Practices



- Identify and Meet an Authentic Community Need.
- Plan Ahead for Service-Learning.
- Acquire Knowledge and Skills Needed for Service.
- Develop Initiative and Responsibility.
- Collaborate with Community Organizations.
- Achieve Curricular Objectives through Service-Learning.
- Reflect Throughout the Service-Learning Experience.

# What does it look like?



# Service-Learning Components



## Academic Preparation

Learning, planning, and skill-building

## Service Action

Direct, indirect, and advocacy service

## Structured Reflection

Ongoing analysis and meaning-making

# Service-Learning Components



## During Academic Prep students must:

- Identify genuine issues affecting the community in areas related to health, education, environment, or public safety.
- Ask “How does this connect to what I’m learning in school?”
- Select non-profit service site(s) and how to address a selected issue.
- Explore the concept of active citizenship.
- Identify skills needed to complete service experience.

A graphic for the Academic Preparation component. It features a blue curved arrow pointing upwards and to the right, with the text "Academic Preparation" in white bold font inside the curve. Below the arrow, the text "Learning, planning, and skill-building" is written in white.

### Academic Preparation

Learning, planning,  
and skill-building

[For more information see page 7 of the MSDE Maryland Student Service-Learning Guidelines](#)

# Service-Learning Components



## Service Action

Direct, indirect, and advocacy service

- Makes up most of the project
- Direct Service, Indirect Service, or Advocacy
- Logging hours is best practice
- Done under the supervision of a non-profit site supervisor who is not a family member.

[For more information see page 9 of the MSDE Maryland Student Service-Learning Guidelines](#)

# Service-Learning Components



**During Structure Reflection students must be able to answer the following:**

## **Structured Reflection**

Ongoing analysis and meaning-making

- Explain your activity and what community needs, did your service address?
- Who benefited from your service?
- What did you learn about yourself, and how did helping others make you feel?
- How was this experience connected to something you learned in a class at school?

[For more information see page 10 of the MSDE Maryland Student Service-Learning Guidelines or page 2 of the Independent Service-Learning Approval Form](#)

# Service Learning is NOT



- Must not complete tasks that replace that of a paid staff member. Clerical tasks can only be less than 25% of the service activity.
- No custodial or janitorial work. Street/garden cleanups are allowed if working with a non-profit group or school.

# Service Learning is NOT

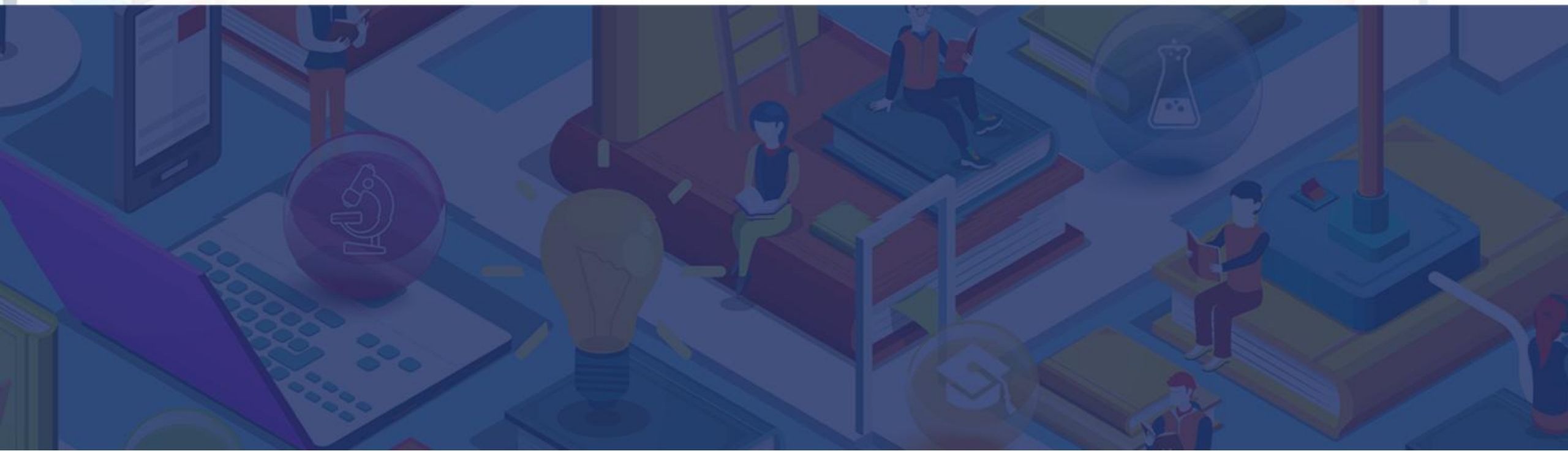


- Never receive payment for services including money, gifts, or scholarships directly related to the service project.
- Can't be under the supervision of a site supervisor who is a relative.





# Embedded (Infused) vs Independent Hours



# Embedded vs Independent Hours



## Embedded

- SSL projects in BCPS courses.
- Lessons contain all the service-learning components and meet all MSDE standards.
- Students must complete the project AND pass course to receive credit.
- Hours are given at the end of the course in Focus.

## Independent

- Need pre-approval by SL coordinator using the [Independent Service-Learning Approval Form](#)
- SSL projects outside of instruction.
- Must meet MSDE 7 Best Practices and contain 3 components.
- In partnership with a non-profit agency.
- Follow specific guidelines for hours and activities.

# Embedded Service-Learning Hours



## Middle School Courses

Art 7  
English 6  
\*Business & Computer Science 6, 7  
Health 6, 8  
Science 8  
Social Studies 8  
\*Technology Education 6, 7

## High School Courses

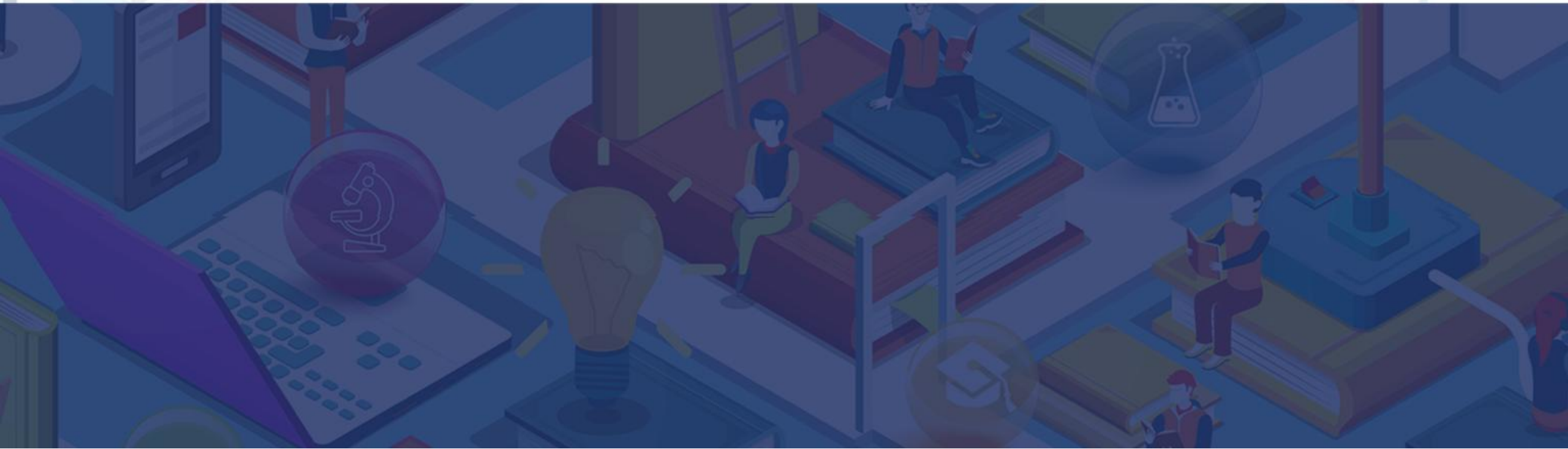
### "B" Courses

American Government 9  
Earth Systems 9  
English 9  
\*Technology Education 9

**These courses are as of SY2026. Subject to change. Specific course numbers are available in the BCPS Course Registration. Subject to change. \*May not be available in every school.**



# Supporting Your Student



# Tools for Families



- [Maryland Service Learning Guidelines \(updated April 2026\)](#)
- [BCPS Service-Learning Guidelines](#)
  - Spanish (coming soon)
- [Independent Service Learning Approval Form \(Updated for SY26\)](#)
- [Service-Learning Coordinators by School](#)
- [Course Registration Guides](#)

A screenshot of the "Access to Focus" login page for Baltimore County Public Schools. The page has a blue background with a compass rose graphic. The main heading is "Access to Focus" in large white and light blue letters. Below it, the text reads "Report Cards &amp; Student Service-Learning Hours!". On the right side, there is a white login form with the following elements: the TEAM BCPS logo and "Baltimore County Public Schools" text; "BCPS Students and Staff" section with a "Login with your BCPS Account" button; "Parents and Stakeholders" section with "Google" and "Microsoft" login options; "Login with your myBCPS account" section with "Sign in name" and "Password" input fields, a "Forgot your password?" link, and a "SIGN IN" button; and a "Don't have an account? Sign up now" link at the bottom. There are also three circular compass rose graphics containing photos of students and staff.



SCAN ME

# BCPS Service-Learning Recognition



**Deadline – must be recorded by end of 3<sup>rd</sup> Marking Period**

## 8<sup>th</sup> Grade Recognition

To Qualify - 75 or more INDEPENDENT HOURS

Top 5 from each school receive:  
BCPS Service Award Certificate

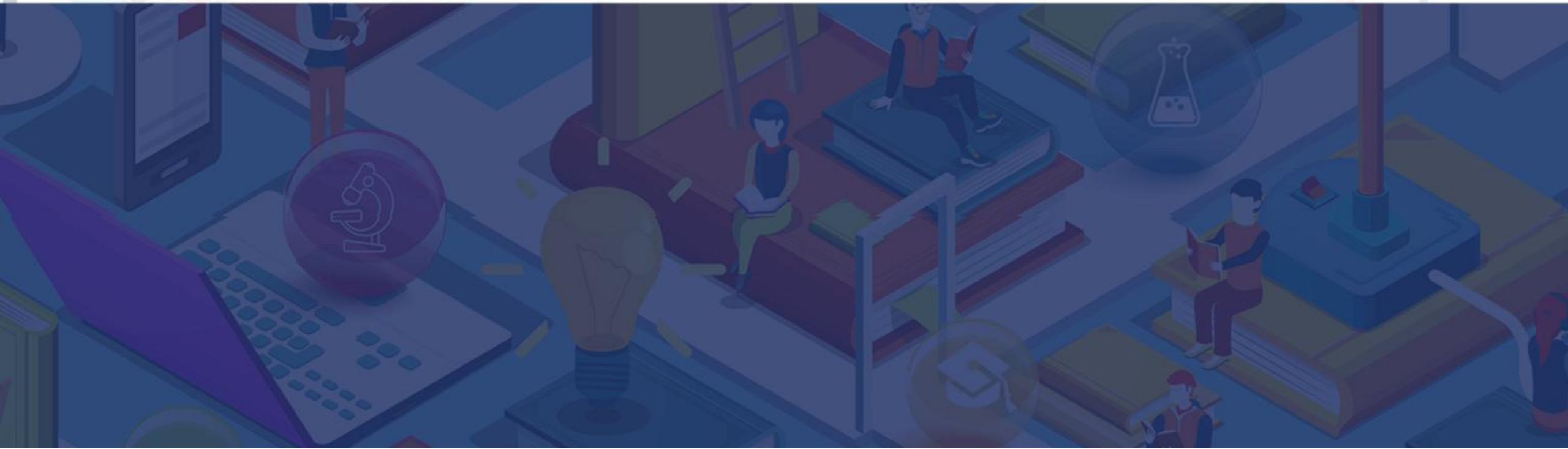
## Senior Recognition

To Qualify – Graduating with 150 or more INDEPENDENT HOURS

Top 10 from each school receive:  
Meritorious Service Award Certificate  
Gold Cord



# Opportunities in the Community



# Community Partnership



**Baltimore County**  
**VOLUNTEER**  
**CENTER**



**Provides a database of student service-learning opportunities from non-profit agencies across Maryland.**

**List is growing! Agencies must be trained with BCPS.**

# Community Partnership



*Involved*

**Baltimore County Public Library**  
**BE Involved Program**

So far this year...

- Laundry Care Kits
- Hygiene Kits
- Garden Crew
- Franklin Woodland Trail Clean Up
- DIY Pet Toys
- Cards for Community Cheer
- Heart Pillows for Cancer Patients

# Service Programs

A logo for "CLEAN GREEN 15" featuring a stylized green leaf and water drop icon inside a blue circle.

**CLEAN GREEN 15**  
LITTER CHALLENGE

*10th Anniversary*

Logos for "TEAM BCPS" and "THE EDUCATION FOUNDATION" are displayed at the bottom of the block.

# Service Programs



Youth Service Month  
Global Youth Service Day

**YSM**

Youth Service Month

April 10 - May 10, 2026

**GYSD**

Global Youth Service Day

April 24-26, 2026

# Service Programs



## January 18, 2027

---

The Martin Luther King, Jr., holiday is an official day of service and celebrates the civil rights leader's life and legacy. Join us this MLK Day as we come together to build a Beloved Community. Let's honor Dr. King's legacy through service and volunteerism and demonstrate how joining together in service can transform your life and the lives of others. Whether it's a small or big act of kindness, service has the power to unite people, build bridges, and heal divides.

Observed each year on the third Monday in January, Martin Luther King, Jr., Day is a federal holiday designated as a National Day of Service to encourage all Americans to volunteer to honor the life and legacy of Dr. King and improve their communities.



YSA's MLK Day of Service work is supported by:



**AmeriCorps**



# Thank You!!

**Office of Family & Community Engagement (FACE)**  
**Stacey Wade, Program Specialist**  
**[swade@bcps.org](mailto:swade@bcps.org)**

Questions can also be directed to your school's service-learning coordinator.